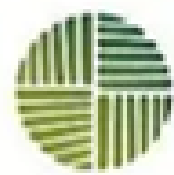
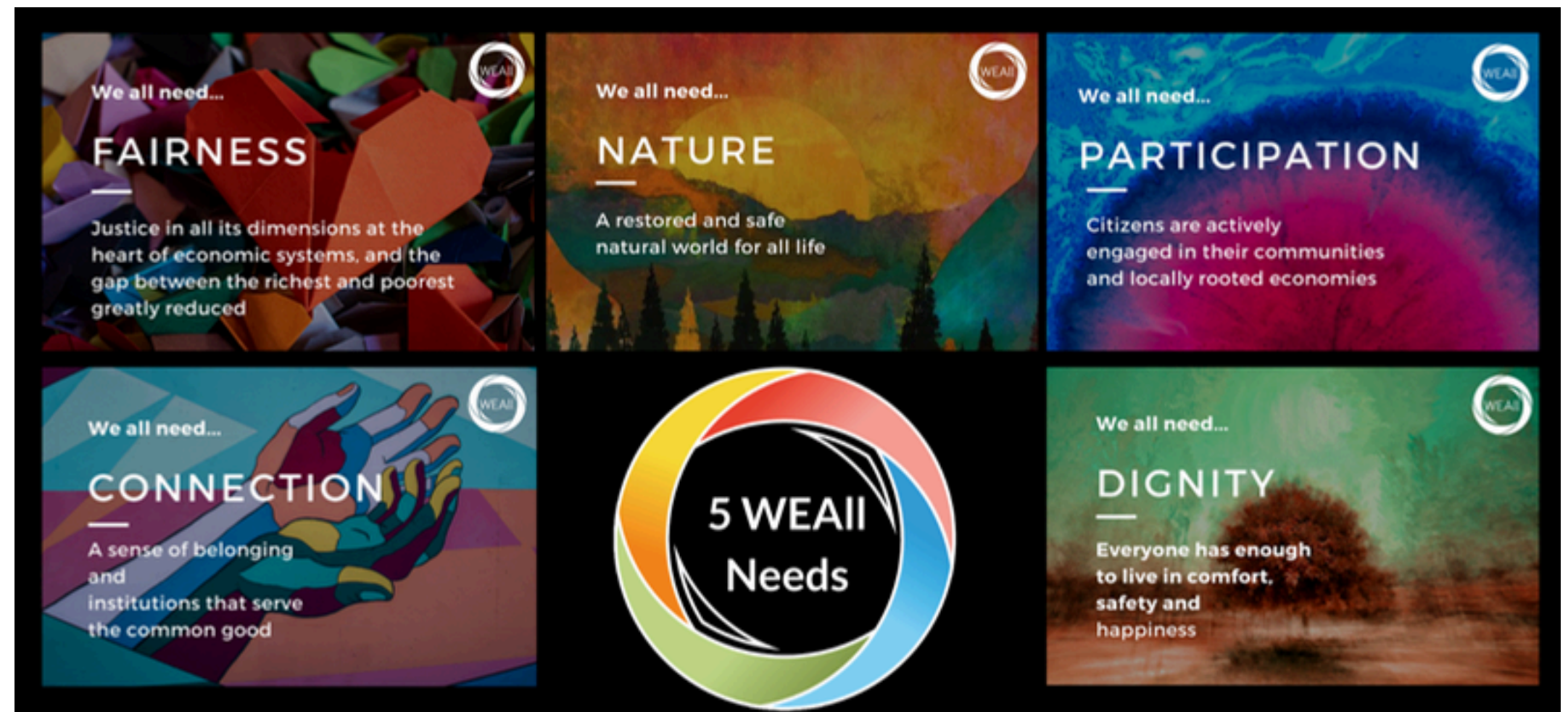


# Rethinking Systems - Growing Local Strength for People and Planet, Roisin Markham

IEN, CELTS, Galway City, Galway County, Clare PPNs

Kinvarra, Galway. 25 April 2026



Irish Environmental Network



Lionra Rannpháirtíochta Pobail Chontae na Gaillimhe  
Public Participation Network Galway County



Galway City Community Network  
Lionra Pobail Chathair Na Gaillimhe



Words matter

# **A Wellbeing Economy is an economy designed to serve people and planet.**

## **Dignity**

Everyone has enough to live in comfort, safety and happiness.

## **Purpose**

We all have a shared sense of belonging & our institutions serve the common good.

## **Nature**

Humans are one with nature and we give back as much as we take from the earth.

## **Fairness**

Justice in all its dimensions at the heart of economic systems.

## **Participation**

Citizens are actively engaged in their communities and economic decisions.

**In a Wellbeing Economy, the rules, norms and incentives are set up to deliver quality of life and flourishing for all people, in harmony with our environment, by default.**

<https://weall.org/what-is-wellbeing-economy>

# 3 stories of our time

Business as Usual

The Great Unraveling

The Great Turning

Joanna Macy, *The Work that Reconnects*



Irish  
Environmental  
Network



Lionra Rannpháirtíochta Pobail Chontae na Gaillimhe  
Public Participation Network Galway County



Galway City Community Network  
Lionra Pobail Chathair Na Gaillimhe





# Rethinking Growth Conference Ireland 2024

[www.rethinking-growth.ie](http://www.rethinking-growth.ie)

# “OUR ECONOMY WORKS INSIDE OF OUR SOCIETY”

Paschal Donohoe,  
Former Irish Minister for Finance  
Rethinking Growth Conference TCD 2024



WELLBEING  
ECONOMY  
ALLIANCE



An Roinn Gnóthai Eachtracha  
Department of Foreign Affairs



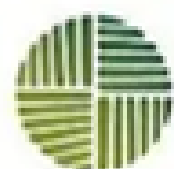
Irish  
Environmental  
Network



Trinity College Dublin  
Coláiste na Tríonóide, Baile Átha Cliath  
The University of Dublin



PARTNERS FOR  
A NEW ECONOMY



Irish  
Environmental  
Network



Lionra Rannpháirtíochta Pobail Chontae na Gaillimhe  
Public Participation Network Galway County



Galway City Community Network  
Lionra Pobail Chathair Na Gaillimhe



# oofeasta

The Foundation for the Economics of Sustainability

Why do we need to rethink growth?



[Feasta](#) – The Foundation for the Economics of Sustainability – [Membership led](#)

[JOIN NOW](#) >

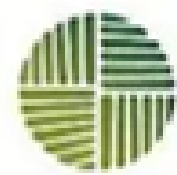
# Our Mission

Feasta, the Foundation for the Economics of Sustainability, envisions a safe and just space for humanity within a resilient, healthy global ecosystem. Feasta articulates and promotes the changes needed to make the necessary transition.

## Some of Our Projects



# Our theory of Change



Irish Environmental Network



Lionra Rannpháirtíochta Pobail Chontae na Gaillimhe  
Public Participation Network Galway County



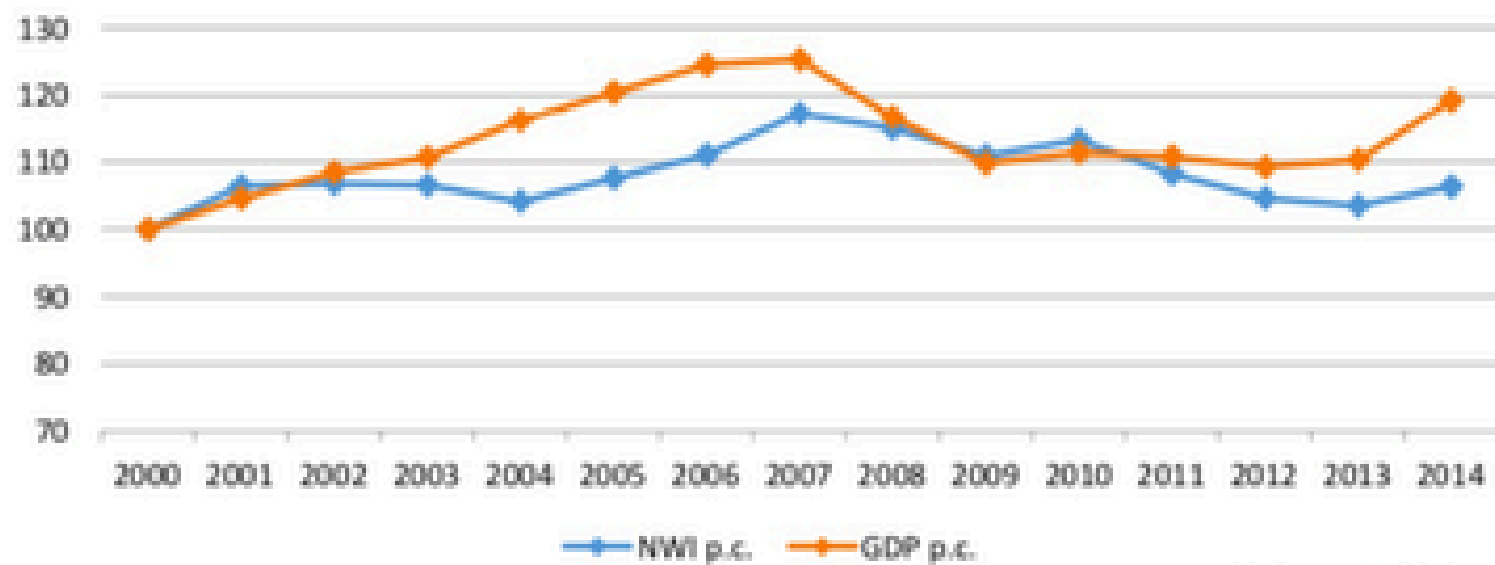
Galway City Community Network  
Lionra Pobail Chathair Na Gaillimhe





Feasta is involved in work to improve measurements of progress and help redefine what's meant by economic success

Figure 5: NWI and real GDP per capita (normalized, 2000 = 100)



Sources: EUROSTAT, FET

Source: 'The National Welfare Index Ireland – a feasibility study', Feasta, 2017: [https://www.feasta.org/wp-content/uploads/2017/10/NWI\\_IRL\\_Feasibility\\_study.pdf](https://www.feasta.org/wp-content/uploads/2017/10/NWI_IRL_Feasibility_study.pdf)



Understanding life in Ireland  
A Well-being Framework

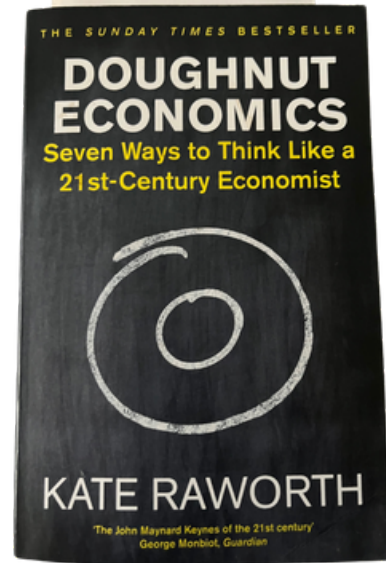


# “HUMANITY IS LIVING FAR OUT OF BALANCE”

Kate Raworth

A renegade economist, creator of the Doughnut of social and planetary boundaries, and co-founder of Doughnut Economics Action Lab

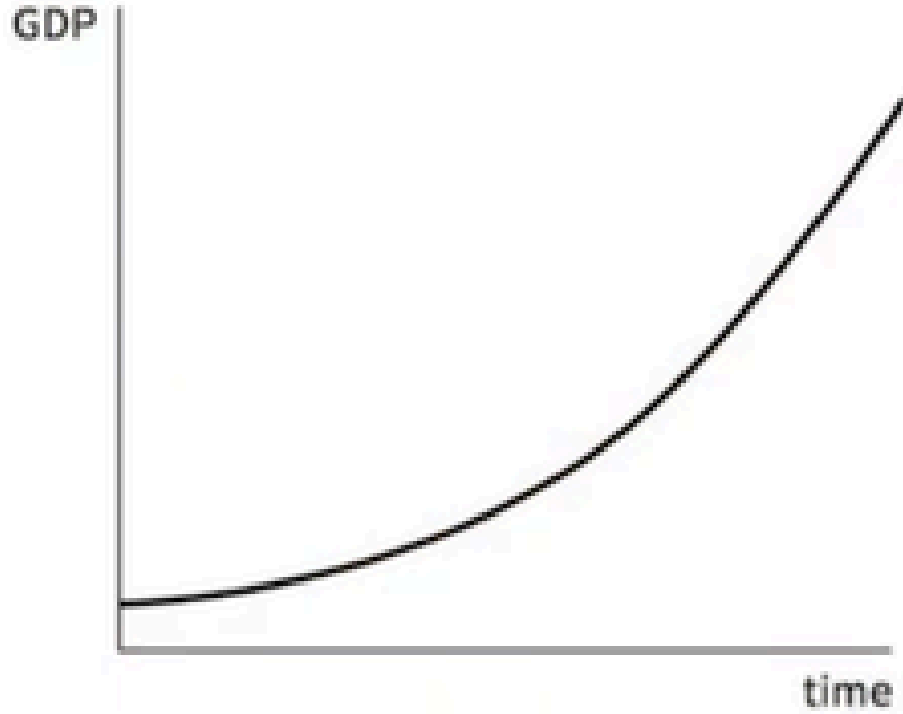
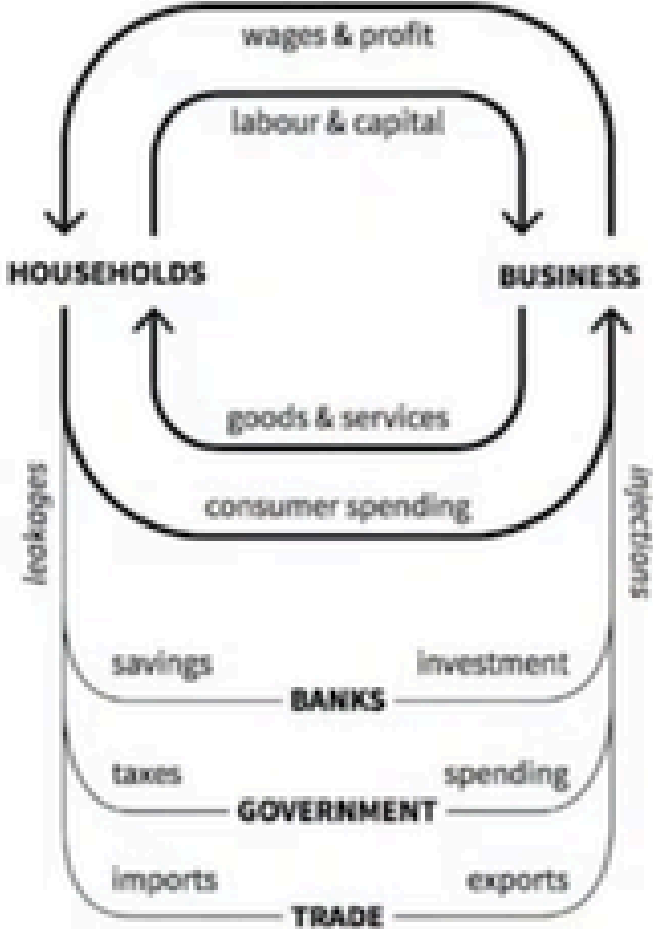




Seven ways to think like a 21st century economist

| Seven Ways to Think:        | From 20th-Century Economics   | To 21st-Century Economics |
|-----------------------------|-------------------------------|---------------------------|
| 1. Change the Goal          | GDP                           | the Doughnut              |
| 2. See the Big Picture      | self-contained market         | embedded economy          |
| 3. Nurture Human Nature     | rational economic man         | social adaptable humans   |
| 4. Get Savvy with Systems   | mechanical equilibrium        | dynamic complexity        |
| 5. Design to Distribute     | growth will even it up again  | distributive by design    |
| 6. Create to Regenerate     | growth will clean it up again | regenerative by design    |
| 7. Be Agnostic about Growth | growth addicted               | growth agnostic           |

# 20<sup>th</sup> century economics



The starting point

The self portrait

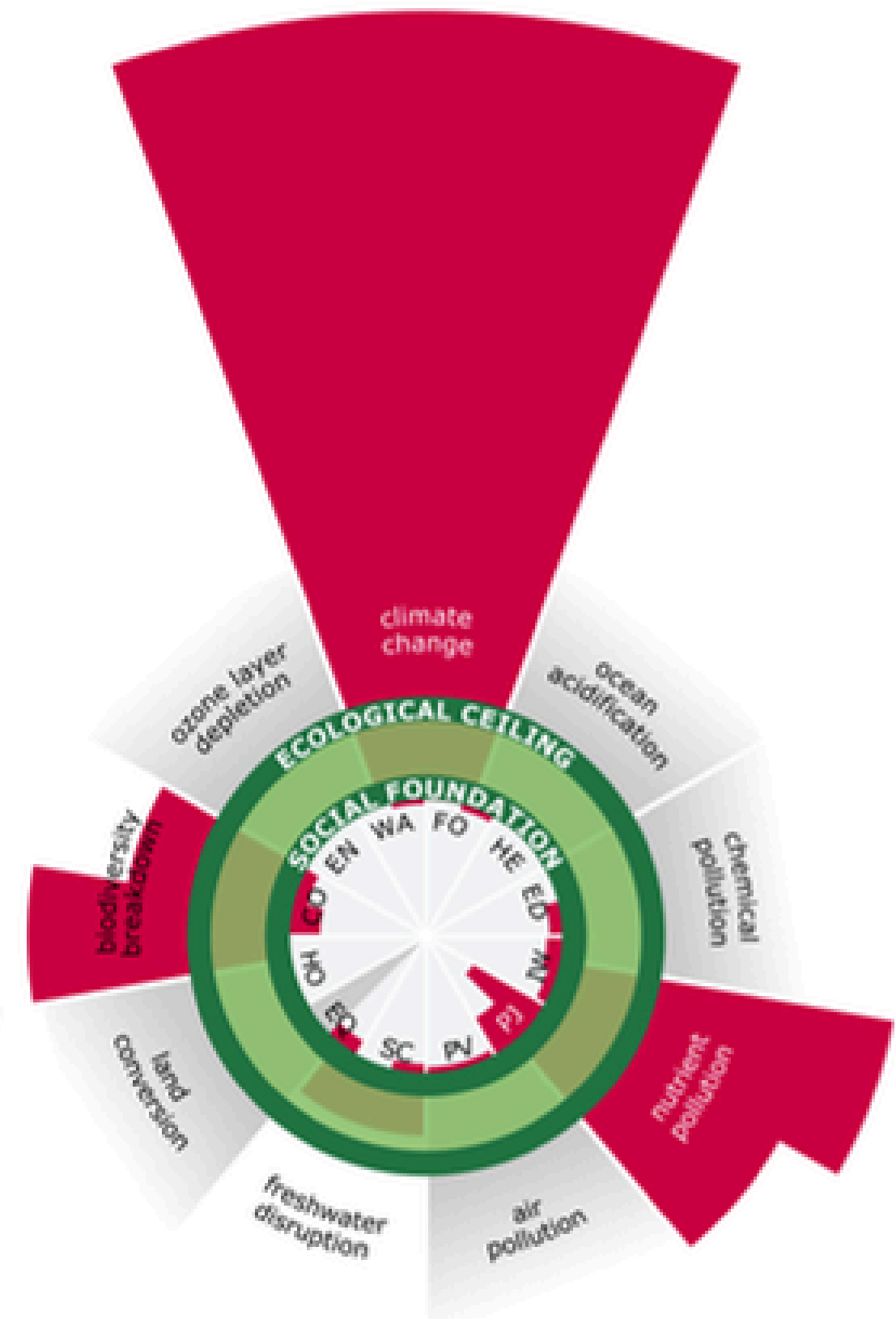
The goal



poorest 40% of countries

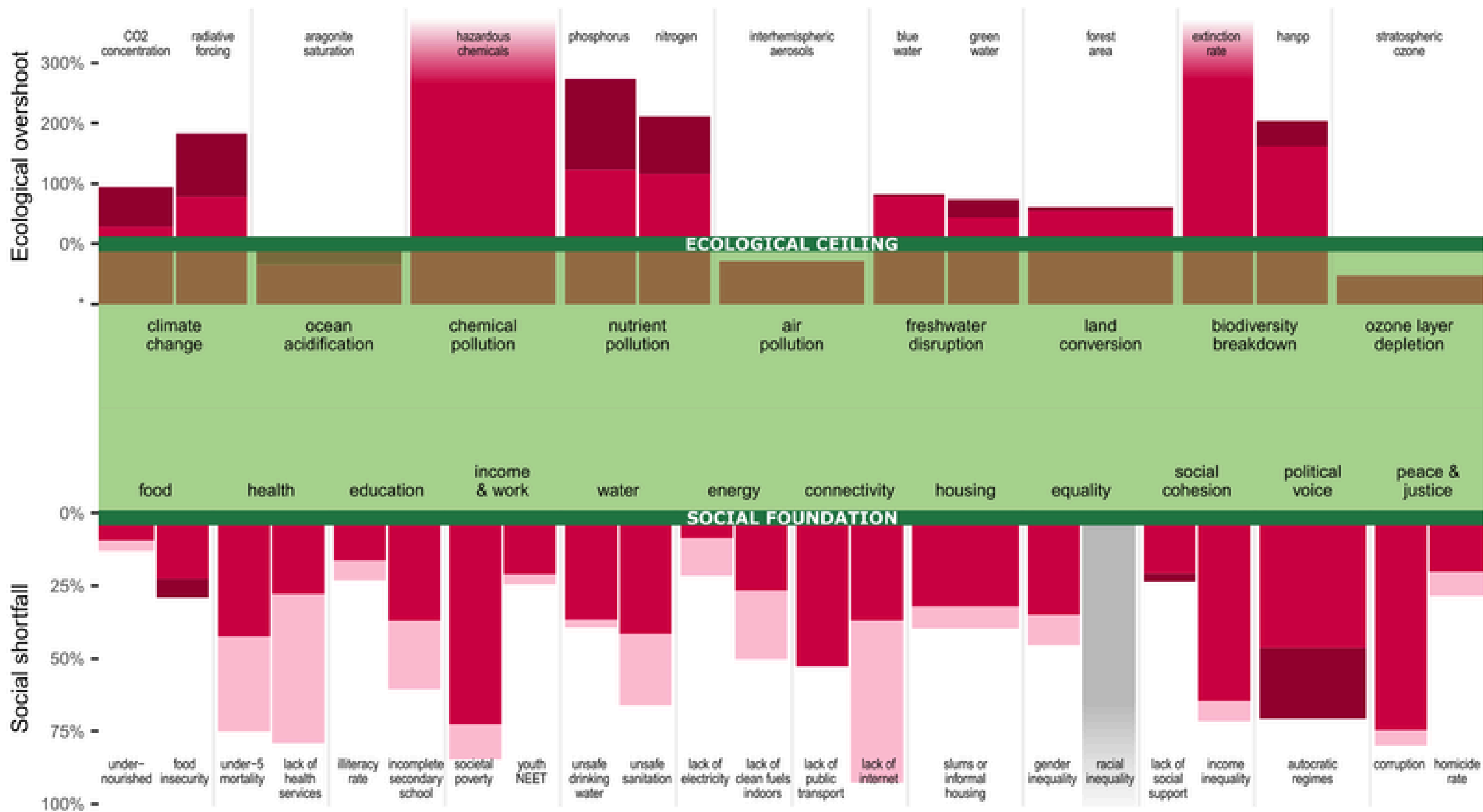


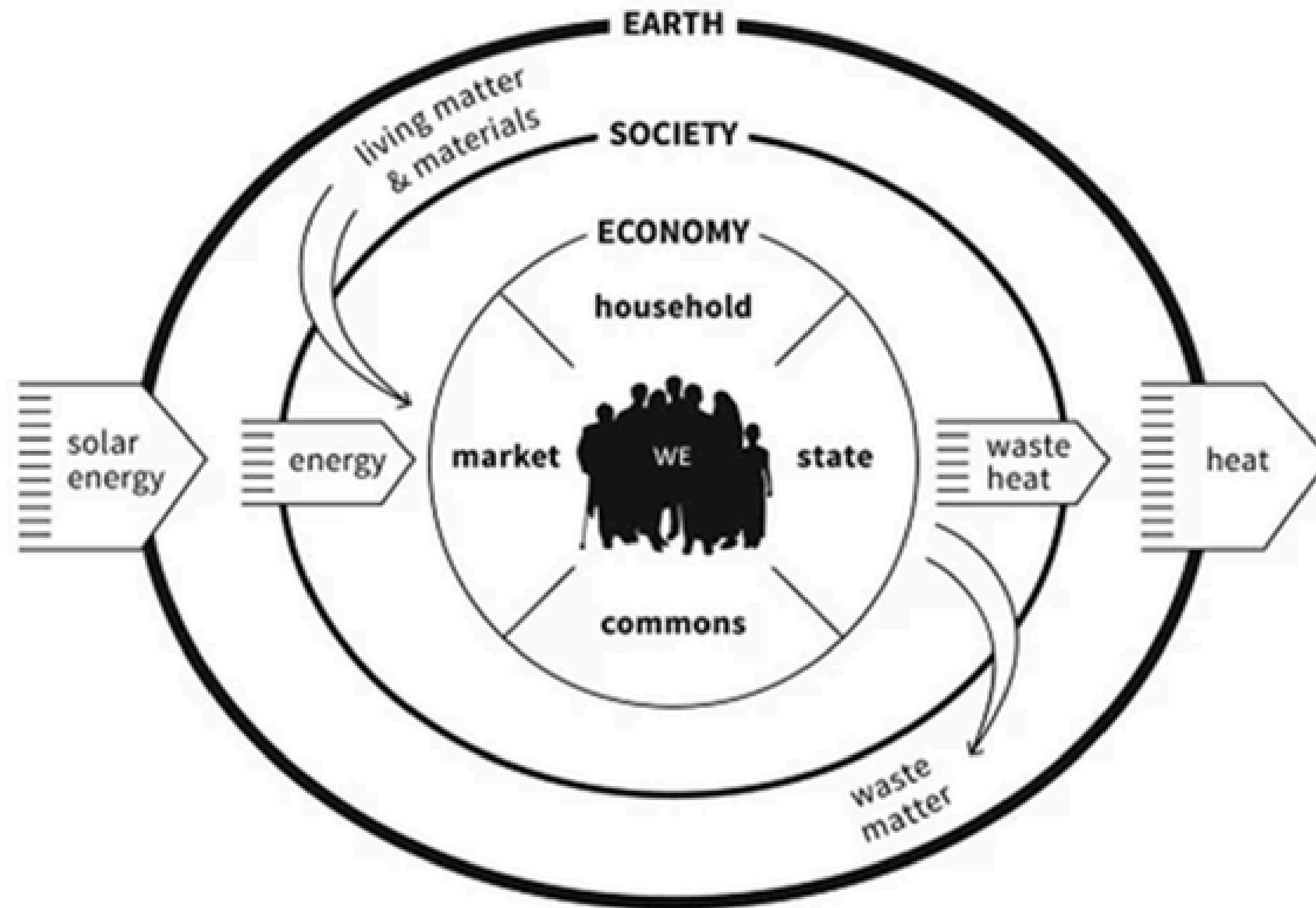
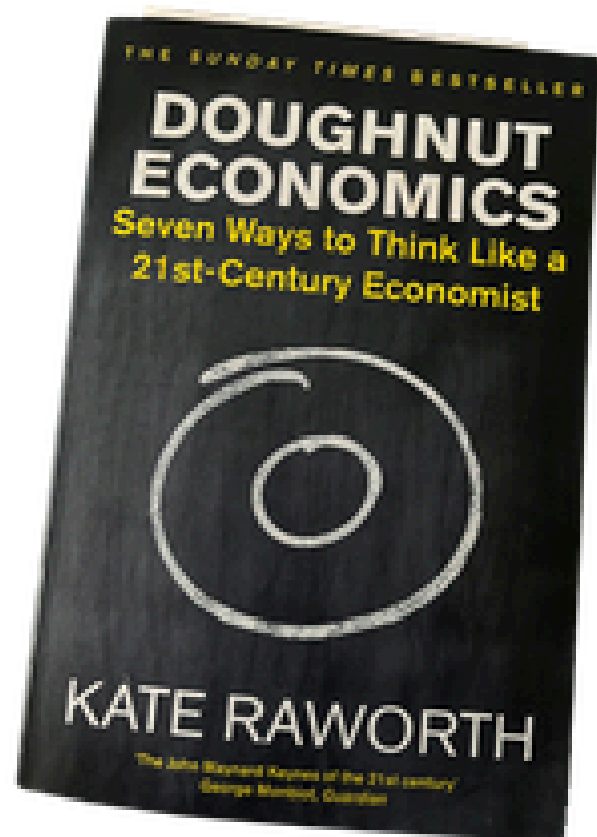
middle 40% of countries



richest 20% of countries

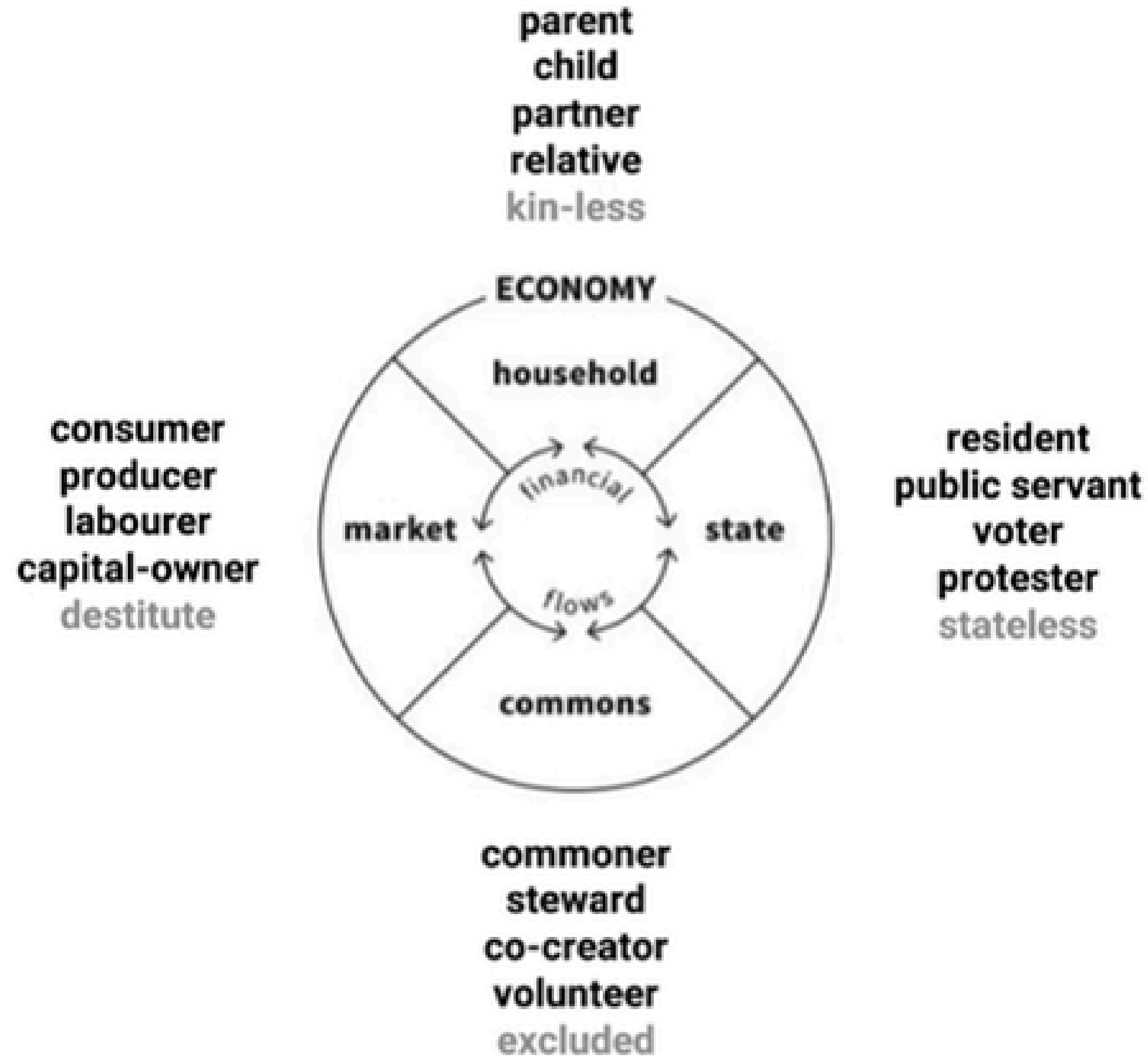
|    |               |    |              |    |                 |
|----|---------------|----|--------------|----|-----------------|
| FO | food          | WA | water        | EQ | equality        |
| HE | health        | EN | energy       | SC | social cohesion |
| ED | education     | CO | connectivity | PV | political voice |
| IW | income & work | HO | housing      | PJ | peace & justice |



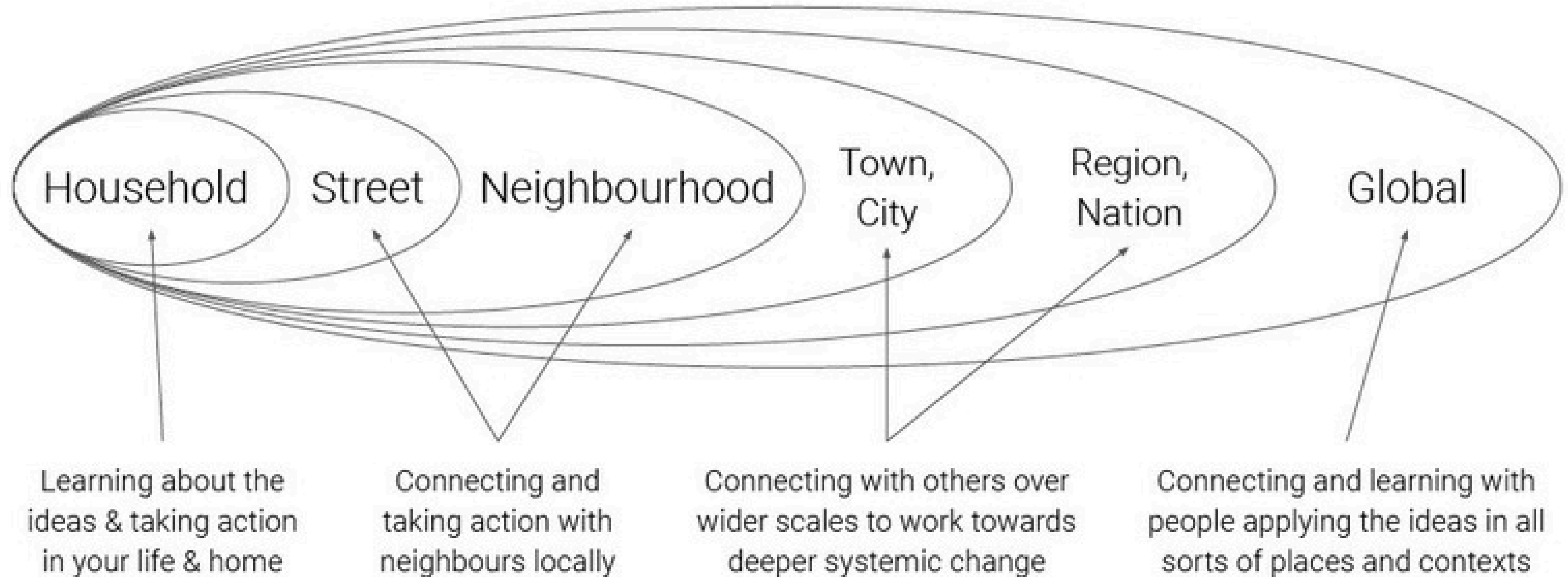


This project is co-funded by the Government of Ireland and the European Union.

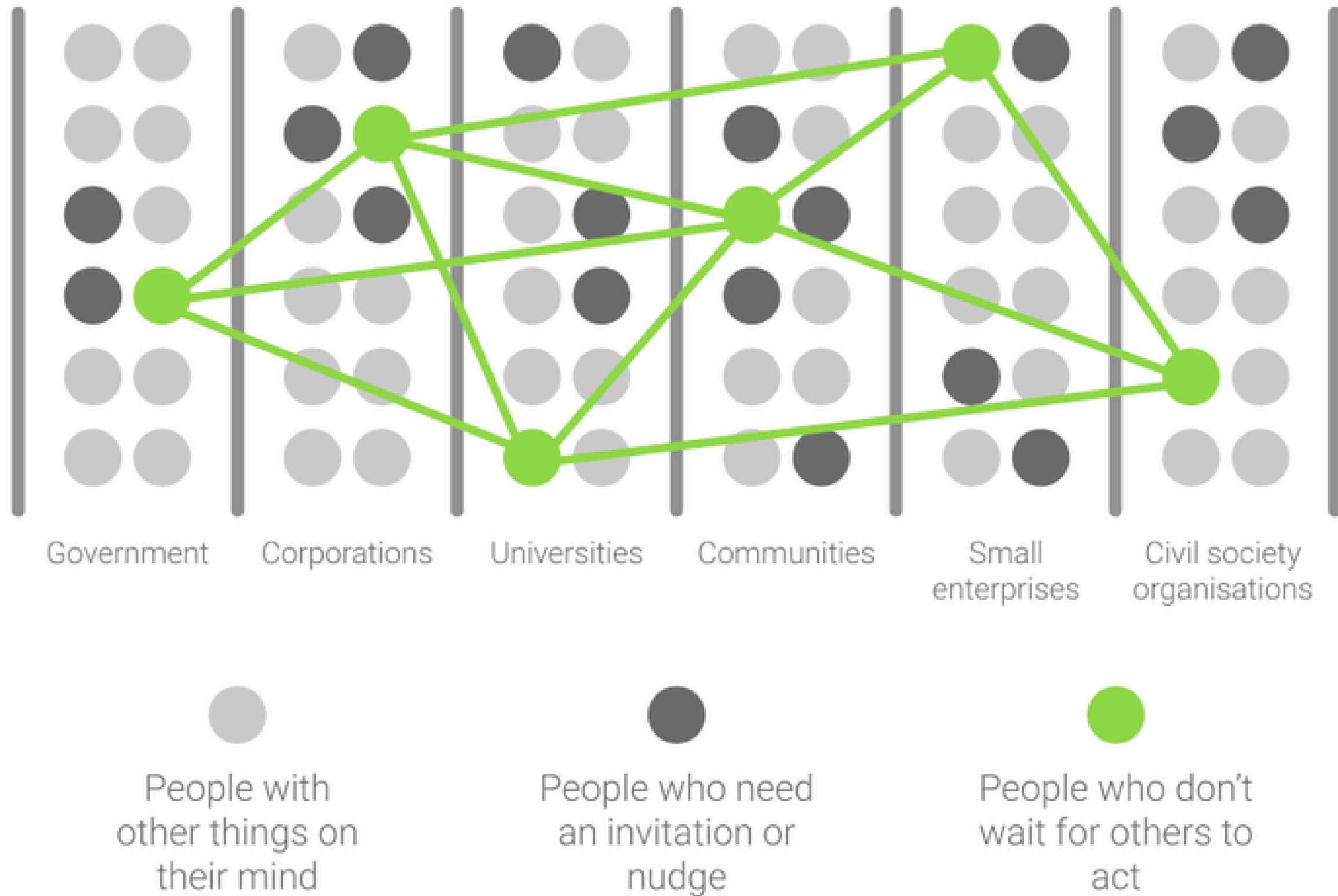
# Many economic roles and relations



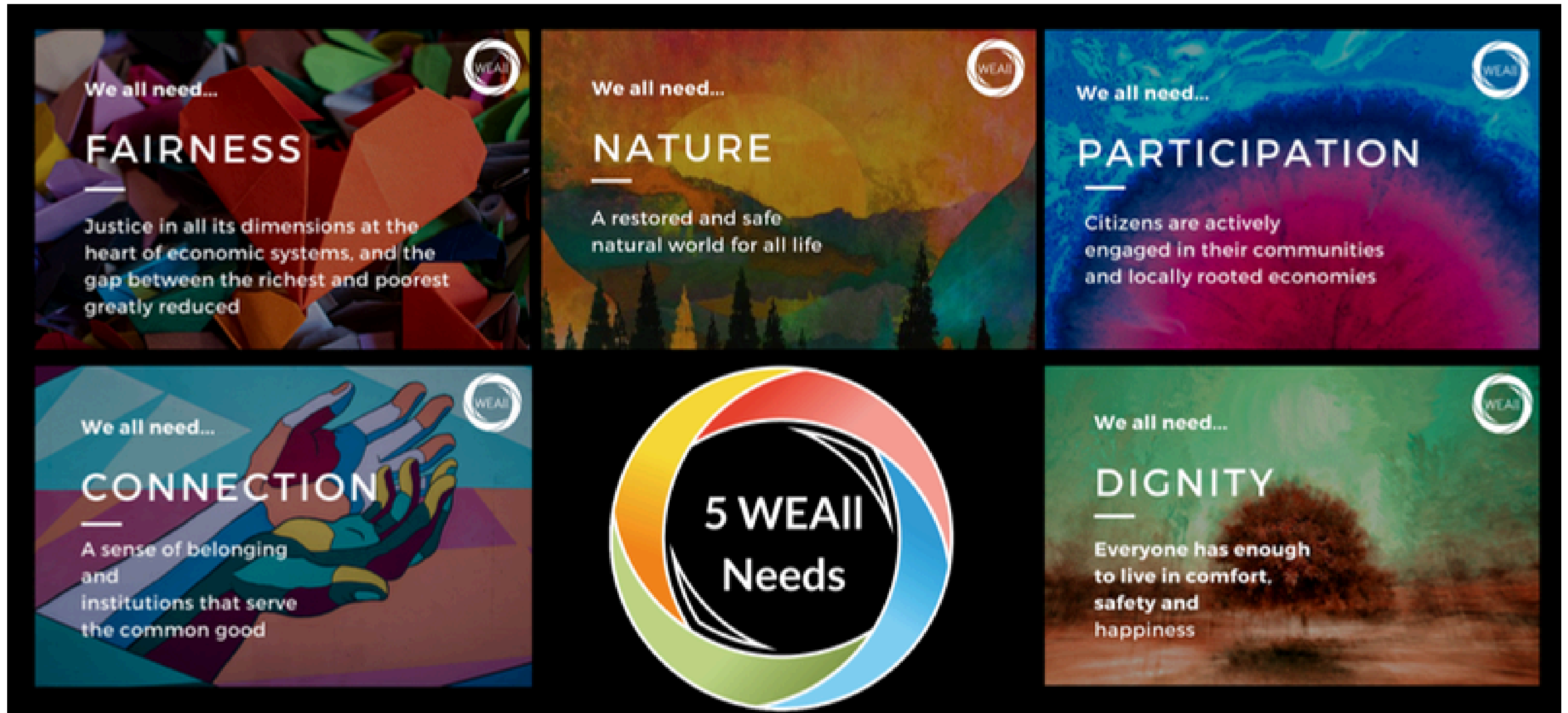
# What do we mean by 'communities'? \*



# Connecting with others to make change visible



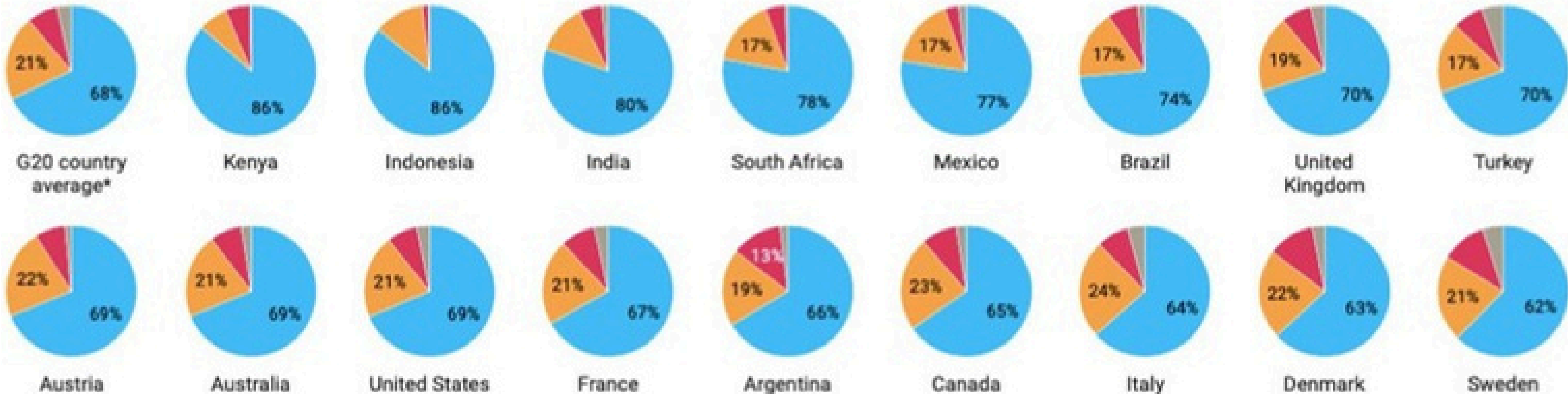
# What do we actually need?



# Who wants a wellbeing economy? Global survey, 2024

“The way my country’s economy works should prioritise the health and wellbeing of people and nature rather than focussing solely on profit and increasing wealth in my country”

Strongly/tend to agree    Neither agree nor disagree    Strongly/tend to disagree    Don't know



Source: Earth4All (Club of Rome)

# Identifying ‘What Matters’ for Community Wellbeing for Public Participation Networks

“An EPA research fellow worked alongside four PPNs, the Irish Environmental Network and Social Justice Ireland to co-design a toolkit for identifying “bottom-up” community wellbeing indicators.” (EPA, 2021)

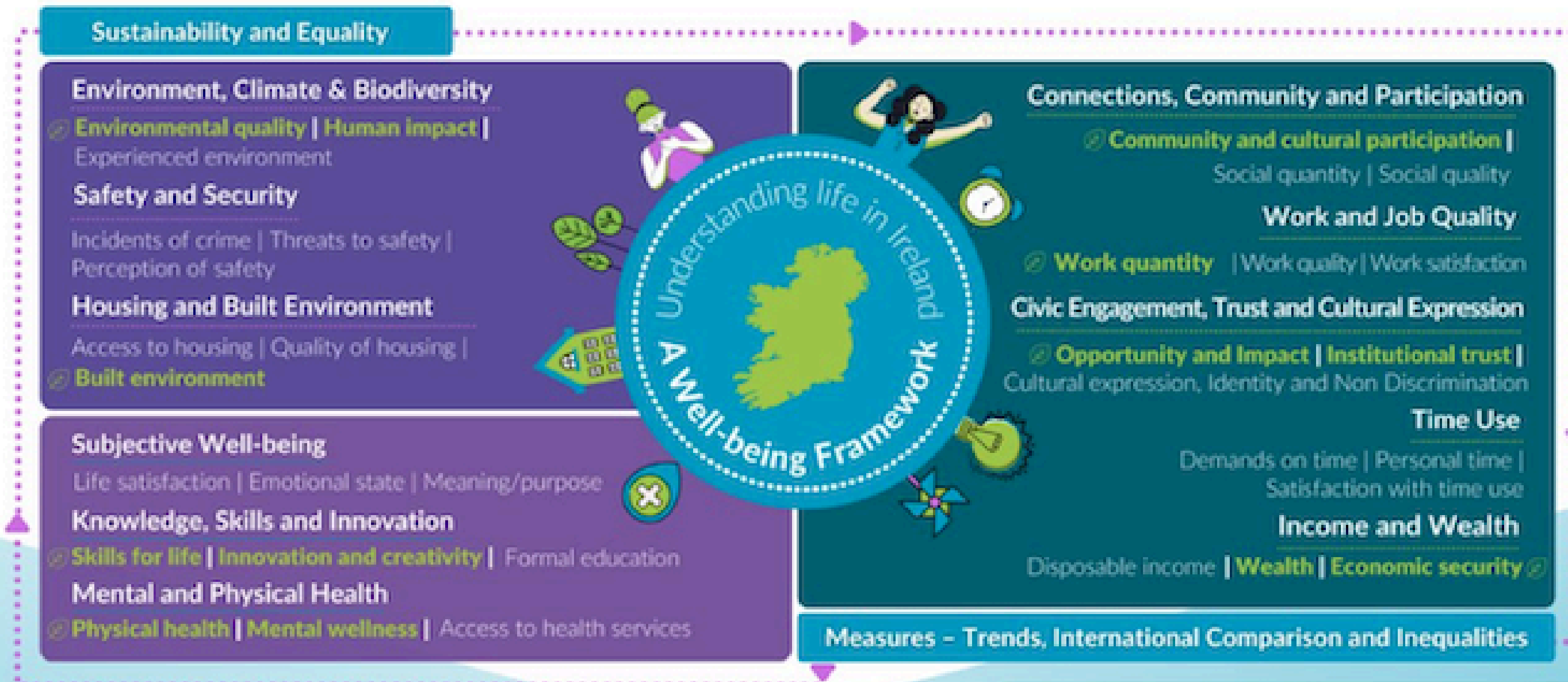


# Dimensions of the Irish Wellbeing Framework



Rialtas na hÉireann  
Government of Ireland

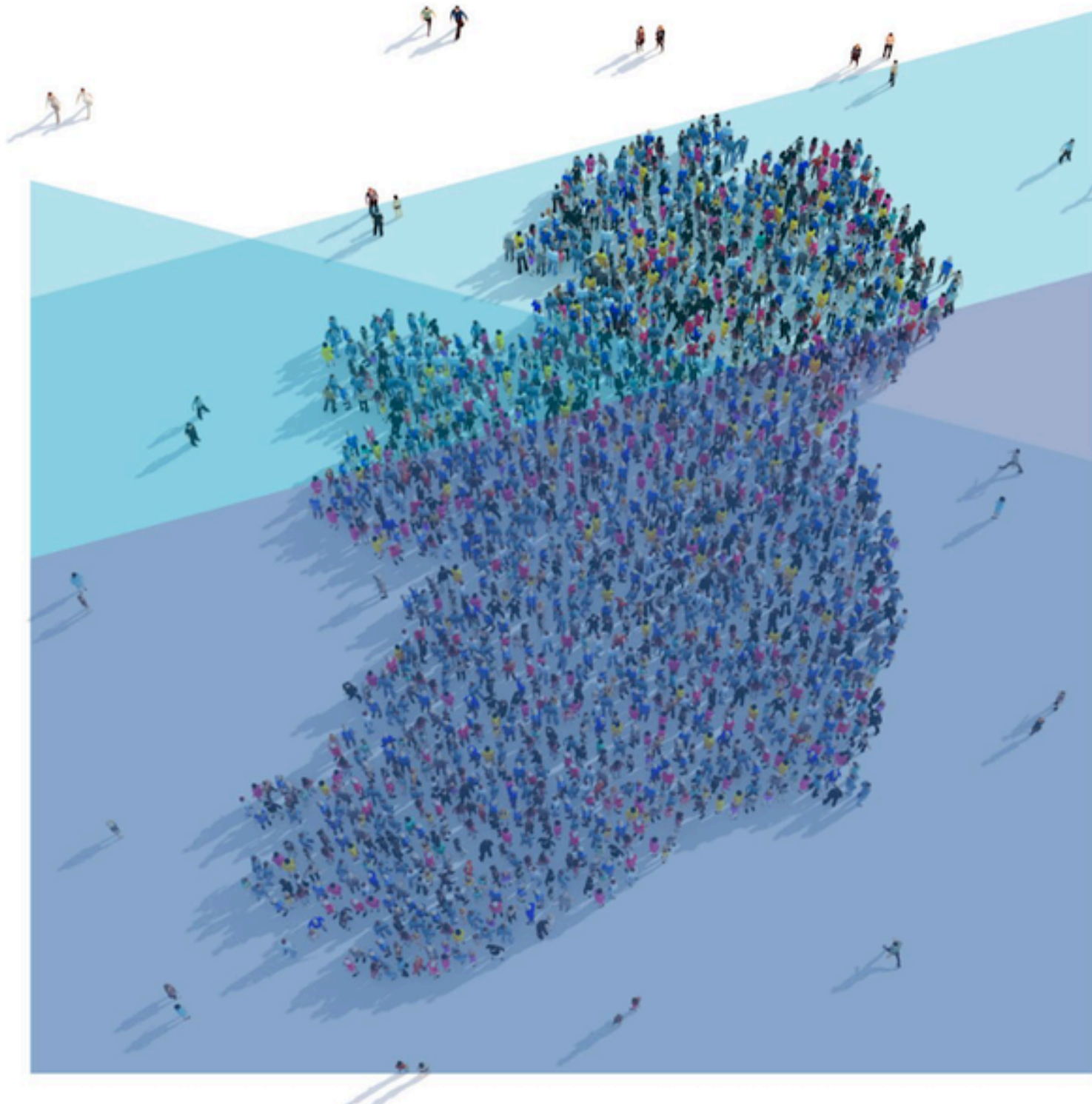
Understanding life in Ireland  
A Well-being Framework



🌱 = supports economic, environmental or social sustainability



## Understanding Life in Ireland: The Well-Being Framework 2025



“Overall, we continue to make progress, both against where we were 5 years ago, and in comparison with international peers. In particular, dimensions that perform well in terms of trend over time include Income and Wealth (driven by the change in net Government worth), Connections, Community and Participation (driven by changing trends in the number of people feeling lonely), and Time Use (driven by trends in longer working hours).”

*Department of the Taoiseach, June 2025*

<https://www.gov.ie/en/department-of-the-taoiseach/campaigns/a-well-being-framework-for-ireland/>



An  
Phríomh-Oifig  
Staidrimh

Central  
Statistics  
Office

# Well-being Information Hub

A snap shot of Well-being in Ireland  
using statistical comparisons from  
a variety of data sources



## Domains

> How we are doing

> **Subjective Well-being**

> Population Rating their  
Overall Life Satisfaction as  
High

> Population who did not Feel  
Depressed or Downhearted in  
the Last 4 Weeks

> School aged Children who  
report being Happy with their  
Life at Present

> Mental and Physical Health

> Healthy Life Years

> Population Reporting  
Depression

> Unmet Need for Medical  
Attention

> Income and Wealth



An Roinn Airgeadais  
Department of Finance

## Sustainability in the Irish Well-being Framework: A Review

May 2022

Department of Finance  
[www.gov.ie/finance](http://www.gov.ie/finance)



# Sustainable Indicator

## ‘Sustainability’ (Economic, Social, Environmental)

15 of the 35 indicators in the CSO’s Well-being Information Hub were ‘tagged’ for sustainability by the Department of Finance. They are broadly categorised into social, environmental and economic sustainability.

I’d have some big questions about the economic ones.

# Environment, Climate and Biodiversity



Pollution, Grime or  
Other Environmental  
Problems



Water Bodies  
assessed as High or  
Good



\* This is a Sustainable Well-being  
Indicator.

Greenhouse Gas  
Emissions



\* This is a Sustainable Well-being  
Indicator.

Waste to Landfill



\* This is a Sustainable Well-being  
Indicator.

**4 environmental  
indicators in Wellbeing  
Framework.**

**Gaps:**

- **Biodiversity**
- **Circular Economy**
- **?**

# Income and Wealth



Median Real Household Disposable Income



Median Household Net Wealth



\* This is a Sustainable Well-being Indicator.

Households making Ends Meet with Great Difficulty



Net Government Worth



\* This is a Sustainable Well-being Indicator

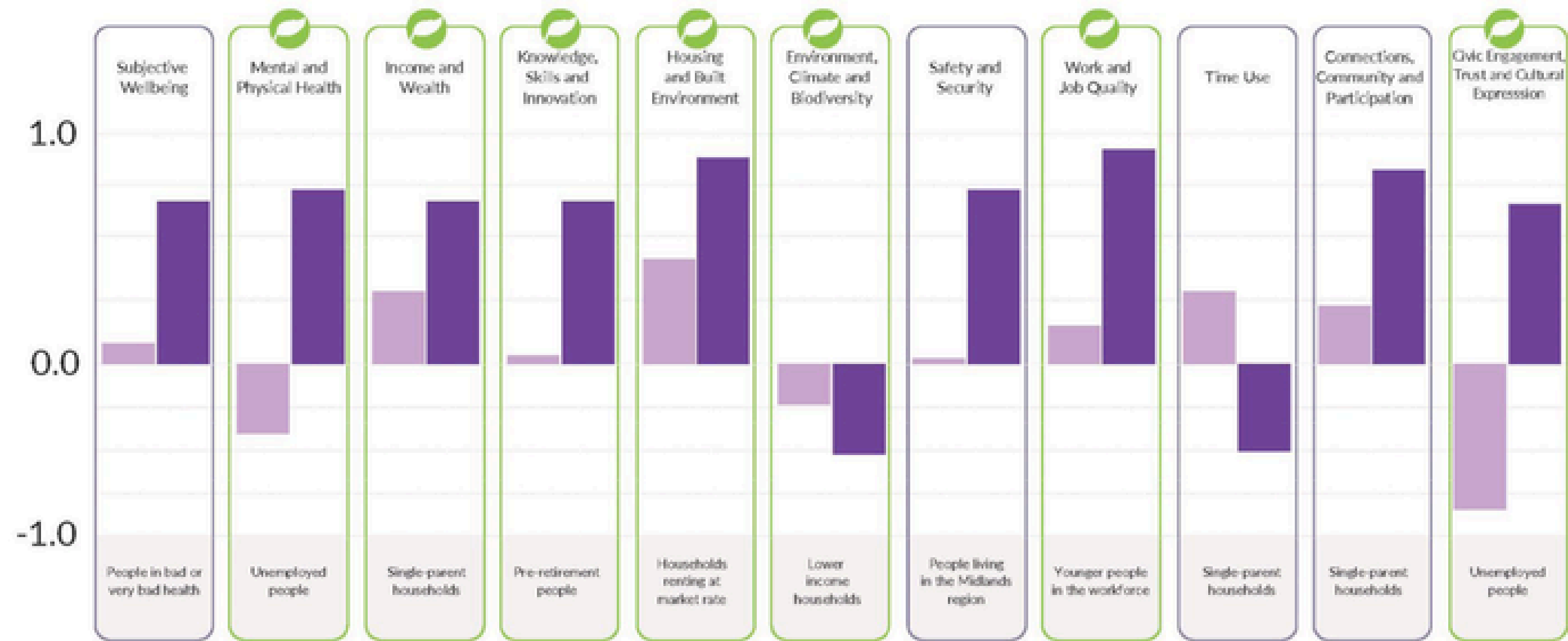
Flaws:

Assumes that more income and financial wealth is always better

‘Net government worth’ uses a one-sided, mercantilist lens and needs rethinking

# Understanding Life in Ireland

A well-being perspective 2025



The group with the lowest relative outcome: the group with the largest gap in performance compared to the top performer under the equality measure in each dimension.

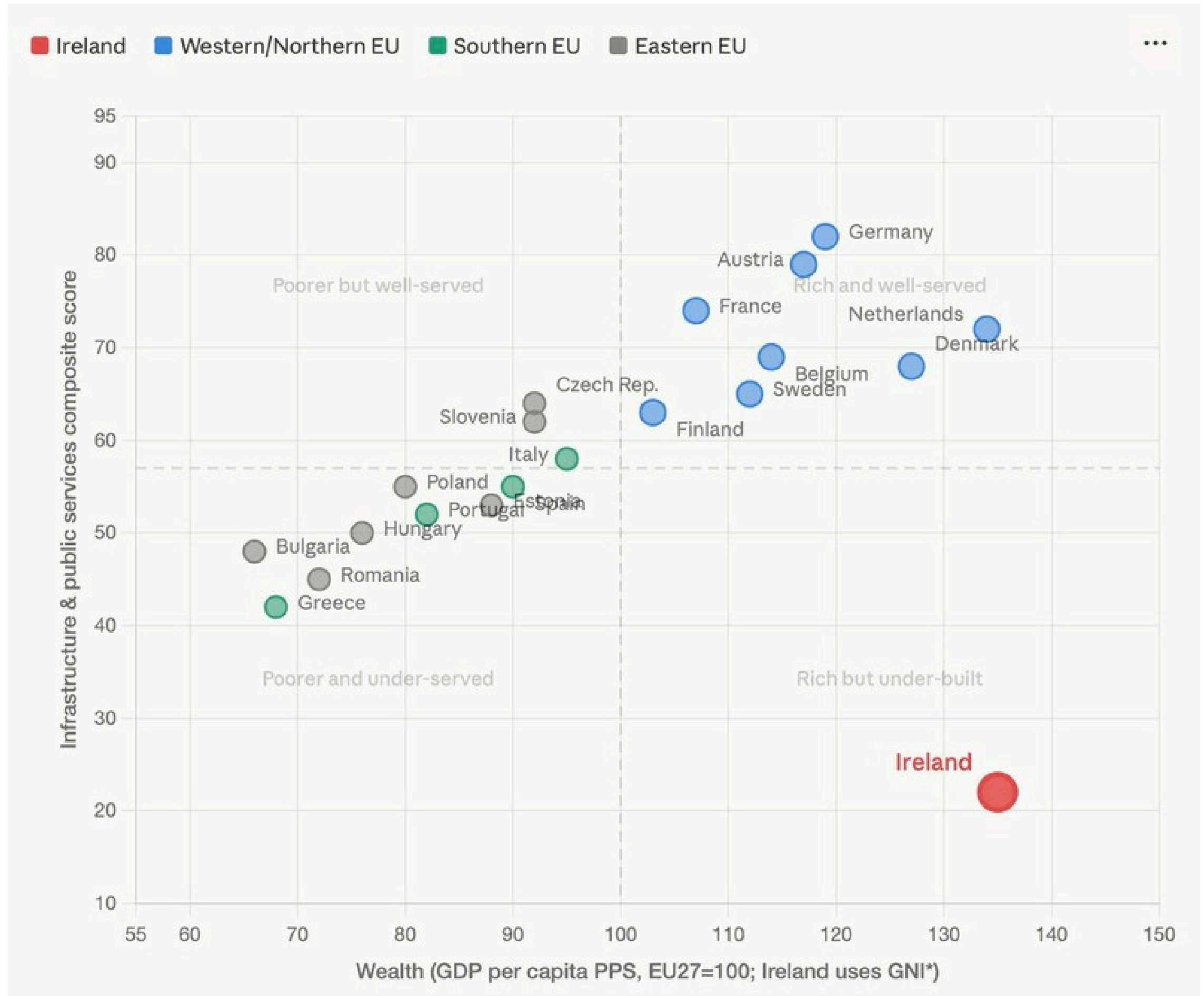
The leaf symbol indicates that the dimension has sustainability indicators.

The Trend score represents the percentage change over time and shows if Ireland is improving or disimproving.

The International score represents where Ireland currently ranks against other EU or OECD countries (depending on data) compared to the average for the most recently available data. I.e. the higher the score, the closer Ireland is currently to being the top performer.



As petrol and diesel costs rise above €2, here's how to maximise fuel efficiency  
 Somewhere around 80km/h is normally best but it all depends on the car, expert advises  
 The Irish Times - Jun 8, 2022



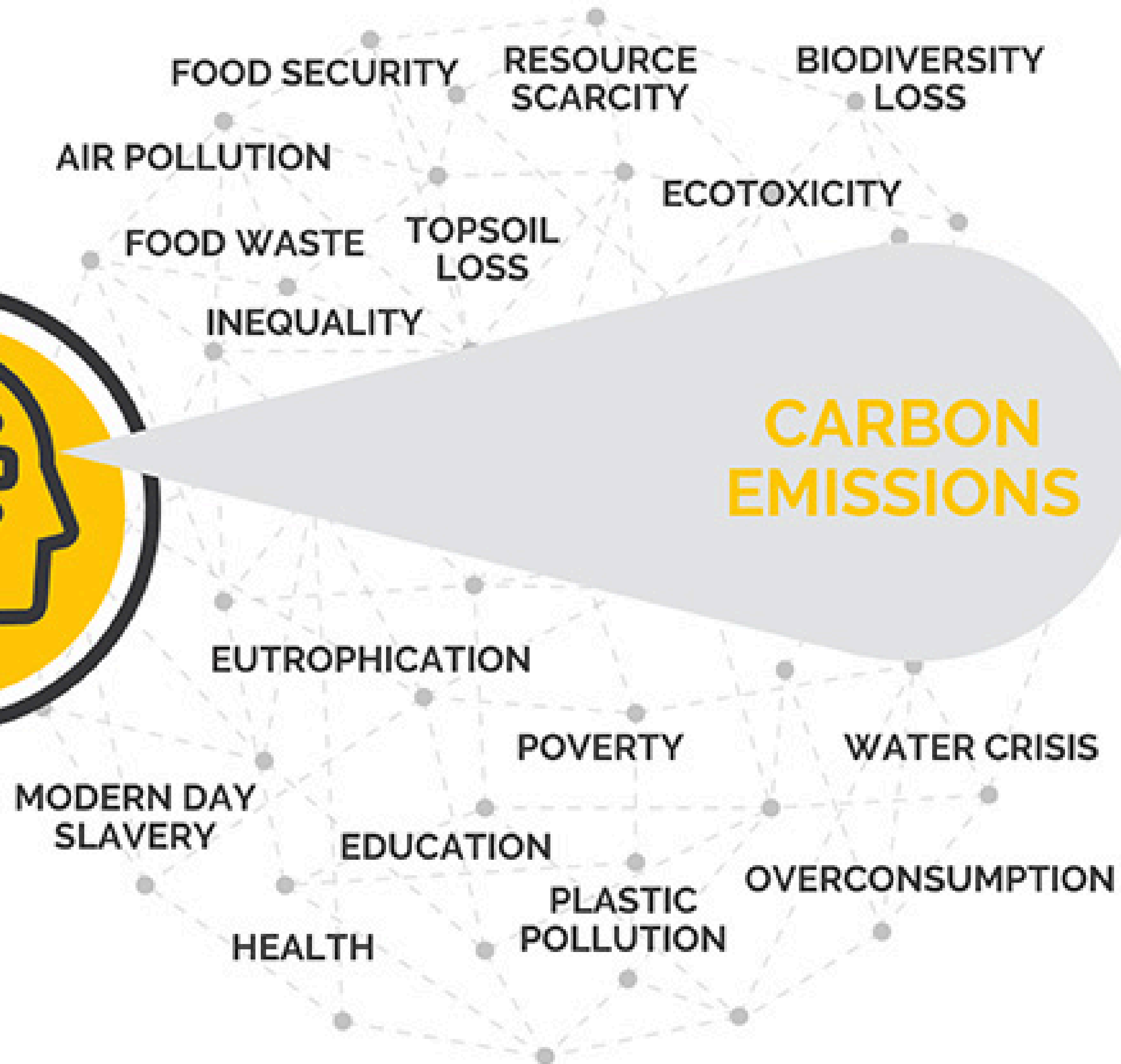
**Mind the Gap - by Sinéad O'Sullivan**

# Tackling the Next

- a compounding series of crises including
- increases in the cost of living
- aging society
- climate change
- economic instability
- biodiversity loss
- growing polarisation
- distrust in institutions
- digital divide, impact of AI

intensifying systemic  
pre-existing issues of

- poverty
- inequality
- injustice



Ireland is committed to achieving climate neutrality no later than 2050 with a 51% reduction in GHG emissions by 2030.

More than 5000 Children homeless.  
Housing & Cost of Living Crisis.

**cultural - moral - social**

2024  
**we need a transformation**

2030

2050

**business model innovation - organisation redesign**

# The Great Turning...

[Examples of the Great Turning on roisinmarkham.com](http://roisinmarkham.com)

- **WALES Future generations Act**
- Energy Community Tipperary
- Bohemians Football Club, The Spark
- Talamh Beo - Feeding ourselves
- Limericks Food Policy
- Trí Síolta Community Land Trust
- Cuan Beo
- Carrickfergus Green Grocers Coop
- CloughJordan CSA
- Agivey River Communities (ARC) Project
- Carlow Environmental Network
  
- TASC Peoples transition
- Bioregional SE Ireland
- Creative Ireland Climate Projects
- Community Gardens



Irish  
Environmental  
Network



Lionra Rannpháirtíochta Pobail Chontae na Gaillimhe  
Public Participation Network Galway County



Galway City Community Network  
Lionra Pobail Chathair Na Gaillimhe



## Prosperous

An innovative, productive and low carbon society which recognises the limits of the global environment and therefore uses resources efficiently and proportionately (including acting on climate change); and which develops a skilled and well-educated population in an economy which generates wealth and provides employment opportunities, allowing people to take advantage of the wealth generated through securing decent work.

## Resilient

A nation which maintains and enhances a biodiverse natural environment with healthy functioning ecosystems that support social, economic and ecological resilience and the capacity to adapt to change (for example climate change).

## Healthier

A society in which people's physical and mental well-being is maximised and in which choices and behaviours that benefit future health are understood.



**LLESIANT  
CENEDLAETHAU'R DYFODOL  
WELL-BEING OF  
FUTURE GENERATIONS**

## More Equal

A society that enables people to fulfil their potential no matter what their background or circumstances (including their socio economic background and circumstances).

## Globally Responsible

A nation which, when doing anything to improve the economic, social, environmental and cultural well-being of Wales, takes account of whether doing such a thing may make a positive contribution to global well-being.

## Vibrant Culture and Thriving Welsh Language

A society that promotes and protects culture, heritage and the Welsh language, and which encourages people to participate in the arts, and sports and recreation.

## Cohesive Communities

Attractive, viable, safe and well-connected communities.

# WALES, FUTURE GENERATION ACT 2015

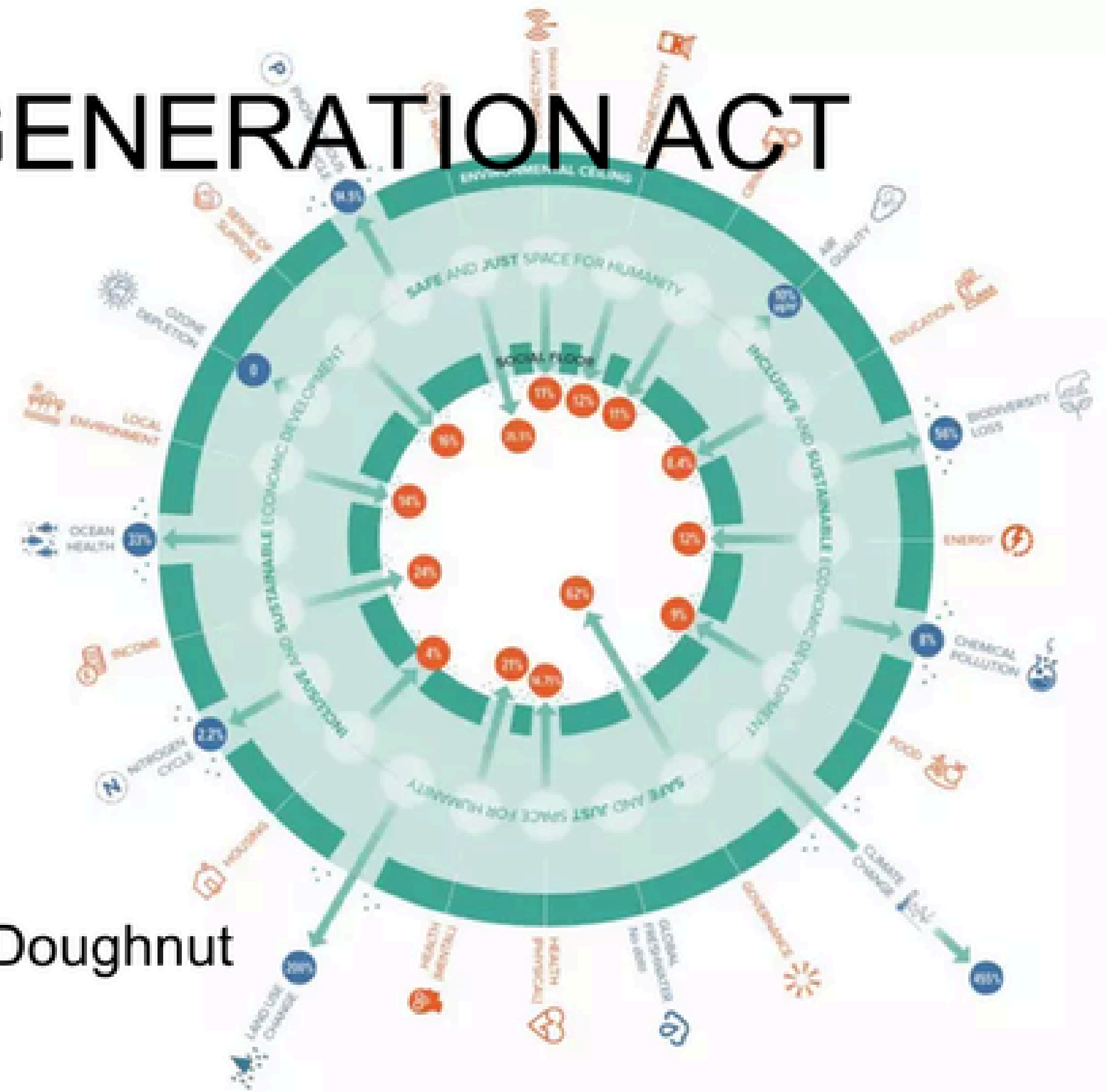
2015

- **Future Generation Act**
- Future Generation Commissioner
- DE as strategic economy tool
- Wellbeing of Wales Annual Reporting

2022 Reviewed

- National Wellbeing Indicators Published
- Annual data reported and published

2023 Brecon Beacons National Park Doughnut

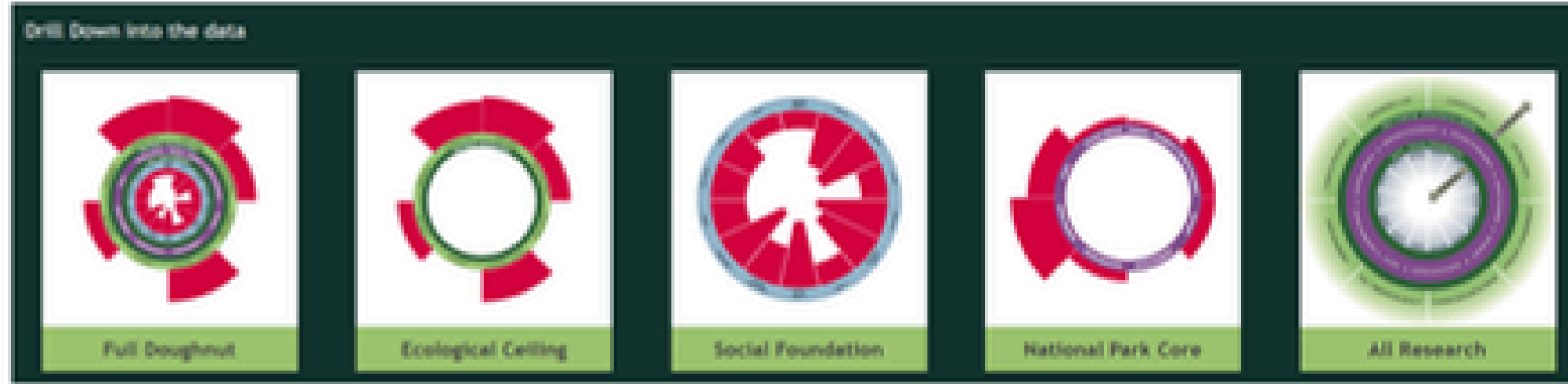


# Wales Wellbeing National indicators



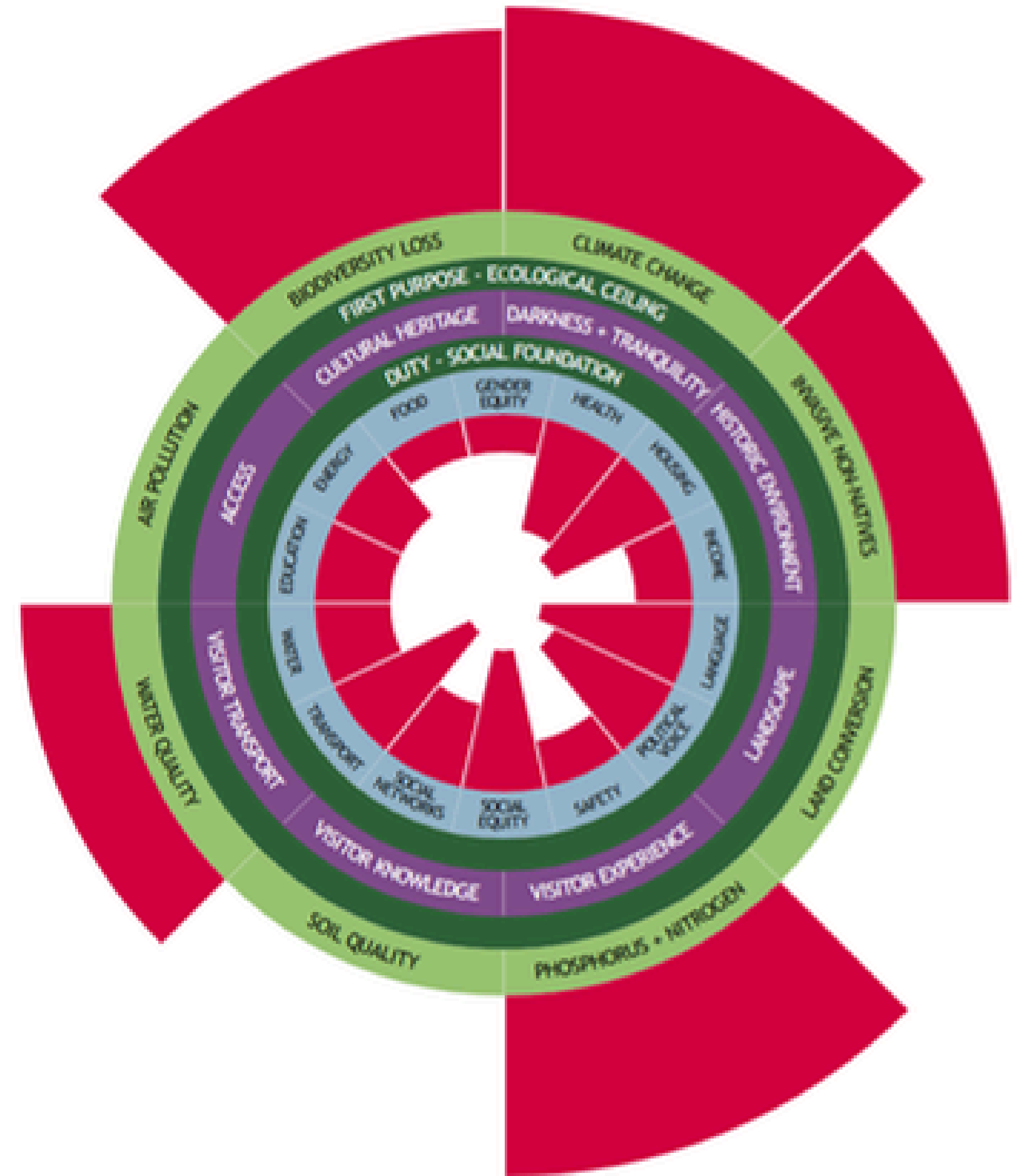
## National Well-being Indicators

|    |   | Goals |   |   |   |   |   |   | National Milestones |
|----|---|-------|---|---|---|---|---|---|---------------------|
|    |   | 1     | 2 | 3 | 4 | 5 | 6 | 7 |                     |
| 01 | Percentage of live single births with a birth weight of under 2,500g  | .     | . | ■ | ■ | . | . | . |                     |
| 02 | Healthy life expectancy at birth including the gap between the least and most deprived  | .     | . | ■ | ■ | . | . | . | ✓                   |
| 03 | Percentage of adults with two or more healthy lifestyle behaviours  | .     | . | ■ | ■ | ■ | ■ | . | ✓                   |
| 04 | Levels of nitrogen dioxide (NO2) pollution in the air   | ■     | ■ | ■ | . | . | . | ■ |                     |
| 05 | Percentage of children with two or more healthy lifestyle behaviours  | .     | . | ■ | ■ | ■ | ■ | . | ✓                   |
| 06 | Measurement of development of young children  | ■     | . | ■ | ■ | ■ | ■ | . |                     |
| 07 | Average capped 9 points score of pupils, including the gap between those who are eligible or are not eligible for free school meals | ■     | . | . | ■ | . | ■ | . |                     |



Y Bannau: The Future takes a much broader definition of natural beauty ; one which encompasses a wide range of elements such as the presence of wildlife, cultural and heritage dimensions and perceptual elements not easily put into words. We also identify that our landscape is not 'natural' in the correct sense of the word. This place has been shaped and nurtured by people over millennia resulting in a landscape that owes its appearance to multiple human influences over millennia, including forest clearances, land enclosure, agriculture, drainage, forestry, religious practices, settlements, and water abstraction.

Our special qualities have been defined to give voice to the many elements of our Natural Beauty. We define these here to ensure that everyone understands what makes the Park so very special and worthy of national protection.



# Community Wealth Building

A practical approach to economic development that aims to keep wealth, ownership and decision-making rooted locally rather than extracted by distant interests. It asks how the wealth created in a place can better serve the people who live there.

In practice, that can mean stronger local supply chains, more democratic ownership, better use of public spending, decent work, and more community control over the essentials of everyday life.

## **INTERNATIONAL:**

Mondragón, Spain

Preston, UK

Cleveland, USA

Drumlin Wind Energy Co-op, Northern Ireland

## **IRELAND:**

Cloughjordan Eco Village

The Spark, Bohemians Football Club

Aran Islands Energy Co-op

Dublin City Council Community Wealth building Policy since 2021 **integrated into LEACP 2024-2029.**



# Public Sector Case Study: DCC LECAP 2024 Public Engagement



**Objective 2: Housing and Placemaking**  
 Dublin's residents will be supported to access secure, affordable, sustainable, energy efficient, accessible, quality housing and places comprising a variety of types and forms for public and private tenures.

DCC LECAP High Level Goals (HLG)

**Objective 4.4:** Enable Dublin city to be responsive to people's needs, interests, and perspectives by delivering mechanisms for democratic participation and enhancing skills for greater civic engagement, including making digital consultation easier for all.

*NOT only DIGITAL*

*Build library of things + community centres every Public Library*

*Host 3 invite everybody to public space where the community can discuss what a needs (around tables) build it*

*More youth led initiatives in public spaces*

*Explicit resourcing of creative engagement*

*Skills to go and make things*

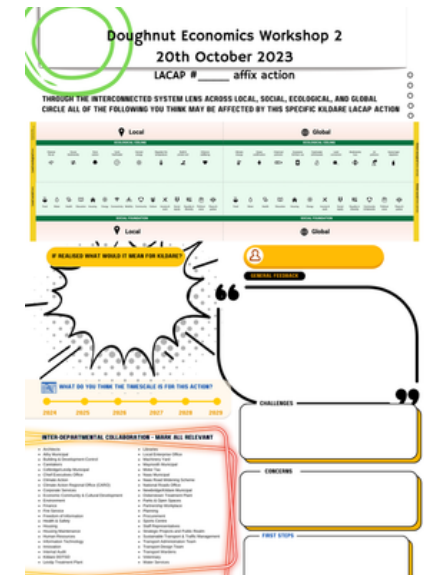
*More youth led initiatives in public spaces*

**Objective 3.2:** Increase the supply of new housing stock to meet the housing demand and needs of all Dublin residents through innovation in design and delivery mechanisms for social and affordable purchase, rental and affordable purchase.

*Explicit resourcing of creative engagement*

*Skills to go and make things*

*More youth led initiatives in public spaces*



**Objective 2.1:** Increase the supply of new housing stock to meet the housing demand and needs of all Dublin residents through innovation in design and delivery mechanisms for social and affordable purchase, rental and affordable purchase.

*Physically active community members enjoying the outdoors participating in walking football, challenges to all ages and abilities of food fresh ingredients + health advice facility for indoor sports + playgrounds, basketball, football*

*Encourage everyone to maintain physical health + ability to move independently using alternatives to motorised transport*

*Encourage access to safe cycling for all ages + abilities - including triathlons to enable super (children) clearly to be included*

*More investment in all districts (at affordable prices)*

*Increased use of community facilities for sport, health + wellbeing activities incl. walking football*

**SUGGESTED POLICIES:**

- Free group classes to assist people of all ages to maintain balance, good muscle strength - pilates/yoga/taichi/aerobic
- Buy building materials from local suppliers
- All schools to have playgrounds/fruit gardens where children grow, harvest + eat
- Access to walking football spaces for school children to play + promote nature + appropriate meals/healthy snacks
- Co-ordinated routes for bikes on all streets
- Support local vendors to sell in cycle lanes

**CONCISE:** Encourage physical health activities can open to all physical abilities + ages/abilities

**FIRST STEPS:**



"I've followed other cities that have been trying to do the same, and it seems to be like a really positive global movement, and I think it's really exciting that Dublin is hopefully going to be part of that."

Emer - Global Action Plan



"It's exciting to realise that the city is interested to hear from the residents, to hear from us as diverse communities, to show that they want us to own what plans they have for the future...with the Doughnut, it says, we all are supposed to be in these safe spaces, and we must understand that for that to happen we all need to work together"

Cebstile - MASI, Movement for Asylum Seekers in Ireland



"I talk in terms of economy, not in isolation, but in terms of socio economics because economy activity happens in a social setting, and we have to embed both"

Akeem - Economist and Dublin City PPN rep for the African community

"I had heard of the LECAP before and I was aware that a second plan was coming into fruition, so this was a good opportunity to really embed the kind of values that I personally align with into the plan."

Steve - Rediscovery Centre



<https://bohemians.coop/our-mission/>

## Mission

To build a **democratic, community-owned economy that tackles climate change and inequality together.**

Creating decent, union-friendly jobs, lowering household costs, and keeping wealth circulating locally through cooperative enterprises and fair public procurement.

Bohemian  
Environmental Justice  
Film Festival  
Clean Air Champions  
League  
Football for Climate  
Justice  
Levelling the Playing  
Field  
Know Your  
Environmental Rights  
Bohs Skills & Trades Hub  
The Bohemian Way



**2035**



Intergenerational fairness and the Wellbeing Economy



# IRELAND HUB COALITION FOR LONG-TERM GOVERNANCE

Coalition2030 Plenary, 26th May 2025



#SOIF2024



**'BUILDING A VISION AND POLITICAL SUPPORT FOR A WELLBEING ECONOMY IN IRELAND'**




**WEBINAR** 7 pm | Tuesday, November 19th



**CATHERINE CARTY**  
UNESCO INCLUSIVE POLICY LAB AND COALITION 2030



**DAVID DONOGHUE**  
FORMER IRISH DIPLOMAT, CO-FACILITATOR OF UNNEGOTIATIONS ON THE 2030 AGENDA

**WHY IRELAND NEEDS A FUTURE GENERATIONS COMMISSION**





## Dignity

Everyone has enough to live in comfort, safety and happiness.

## Purpose

We all have a shared sense of belonging & our institutions serve the common good.

## Nature

Humans are one with nature and we give back as much as we take from the earth.

## Fairness

Justice in all its dimensions at the heart of economic systems.

## Participation

Citizens are actively engaged in their communities and economic decisions.

# PPN REPRESENTATIVES AS CHANGE CHAMPIONS

1

Seeding new ideas & challenges business as usual

2

PPN sees the system - demands accountability, submissions, reviews, our voice on SPCS

3

Stengthens democracy increasing the networks of networks effect for envirometal and social justice



Irish  
Environmental  
Network



Lionra Rannpháirtíochta Pobail Chontae na Gaillimhe  
Public Participation Network Galway County



Galway City Community Network  
Lionra Pobail Chathair Na Gaillimhe





## Róisín Markham

Róisín Markham is a strategic designer and transformation leader working toward a regenerative, wellbeing economy in Ireland. Her work brings together social and climate justice, economic literacy, practical tools and a hopeful, imaginative approach to change.

Founder of the Irish Doughnut Economics Network, a member of FEASTA, and part of the core team at the WEAll Ireland Hub, connecting communities, public bodies, and businesses to reimagine how we can thrive within planetary boundaries.

She sits on the Wexford County Council Economic Strategic Policy Committee as a PPN, Public Participation network Environmental Representative.

